



## D33 SUV TECHNICAL SPECIFICATIONS

**D33 SUV**


### GENERAL CHARACTERISTICS

Length overall	10,20 m
Hull length	9,40 m
Beam	3,15 m
Draft - hull	0,49 m
Light Displacement	3950 kg
Fuel capacity	450 L
Fresh water capacity	100 L *
Gray water capacity	50 L *
Minimum engine	400 HP
Maximum engine	800 HP
Top speed range	32 - 50 knot
Cabins	1 / 2
Berth	4
Max people on board	8 / 10
Design category	CE Cat. B / C
Hull	Twin stepped deep V
Hull design	Adam Younger Design
Design by	Epikworks & Dromeas Design Studio
Engineering by	KND Naval & Dromeas Engineering



-2021 Q1 launch, please do not share without permission

Designs are preliminary & subject to change



## STANDARD EQUIPMENT

### CONSTRUCTION

#### HULL & DECK

White gelcoat hull & deck  
 Vinylester skincoat  
 Vacuum infused PVC foam-cored sandwich fiberglass hull & deck  
 Vacuum infused PVC foam-cored sandwich fiberglass bulkheads  
 Closed cell PU formed GRP structure  
 Fully non-wood non-polyester structural construction

#### DECK GEAR

Heavy duty rub rail  
 Self draining cockpit  
 Non-skid decking  
 Self draining anchor locker  
 Stainless steel bow roller  
 Stainless steel deck hand rails  
 2 forward stainless steel mooring cleats  
 2 midship stainless steel cleats  
 2 aft stainless steel mooring cleats  
 Stainless steel pulpit  
 Swimming platform  
 Folding swim ladder  
 Storage lockers under the cockpit floor

#### COCKPIT & DECK

Forward glass windscreen  
 Manual opening sunroof  
 Sunroof sliding curtains & mosquito net  
 Dive door  
 Foredeck sunbed cushions  
 Rod holders on side decks - 2

#### HELM STATION

Integrated performance console  
 Dashboard with engine control & space for nav. station  
 Electrical instrument switches  
 Pilot and co-pilot seats  
 Compass  
 Horn  
 Fuel gauges  
 Cupholders  
 Console hand rails

#### COCKPIT WETBAR (under pilot seat)

Stainless steel sink and faucet  
 Drawers  
 Storage (optional fridge space)  
 Storage spaces

### INTERIOR

#### SUV PILOTHOUSE

Sliding starboard door to console with large opening  
 Sliding port door with large opening  
 Sliding cabin entry door  
 Sliding aft window  
 LED ceiling lights  
 Indirect LED ceiling lighting  
 Aft bench  
 2 x folding jump seats port & starboard  
 Storage spaces  
 Stainless steel grab rails  
 Cupholders  
 Access to technical areas  
 12V & USB outlets

#### BELOW DECK

Sliding entrance to companionway  
 Hull windows  
 Access to head  
 Access to technical areas  
 Storage spaces  
 LED ceiling lights  
 12V & USB outlets

#### GALLEY

Sink and faucet with fresh water option  
 Drawers  
 Storage (optional fridge space)  
 Storage spaces

#### FORWARD CABIN

Hull windows  
 Opening deck hatch  
 Opening deck port lights  
 Opening hull port lights  
 Double bed  
 Storage under bed  
 Access to hull & bow thruster under bed  
 Reading lights

#### HEAD

Access from companionway  
 Opening deck hatch  
 Hull windows  
 Sink and faucet with fresh water option  
 Shower (with fresh water option)  
 Mirror  
 Storage spaces  
 Ceiling LED lights

**AFT CABIN**

Double bed  
Hull windows  
Deck windows  
Opening porthole  
Cupboards  
LED lighting  
Reading lights  
Mirror  
USB Outlets  
Storage spaces  
Access to technical areas

**MECHANICAL EQUIPMENT**

Hydraulic steering (with engine or pre-rigging)  
Stainless steel fixed fuel tank with deck fillers  
Electrical & manual bilge pumps  
Windscreen wipers  
Engine room natural ventilation  
Engine room forced ventilation (only with inboard or generator systems)  
Automatic fire extinguishing system (only with inboard or generator systems)  
Volvo Penta trip computer (only with inboard engines)

**ELECTRICAL SYSTEMS & LIGHTING**

Start battery, 1x 110 Ah incl. with engine  
Service battery, 1 x 110 Ah  
Electrical systems control panel  
Navigation lights  
Interior indirect LED lighting  
12V & USB outlets

**OPTIONS****DECK GEAR**

Electrical windlass with remote control  
2 aft stainless steel mooring cleats for cross-docking  
Aft roller for rear anchor  
Aft electrical windlass for rear anchor  
Carbon fiber folding pasarelle  
Additional swim ladder with grab rails

**EXTERIOR COMFORT**

Hardtop electrical opening glass top (instead of manual)  
Hardtop stainless steel roll bar  
Hardtop aft arch with 4 rod holders  
Aft cockpit bench  
Removable aft cockpit table with conversion to sunbed (requires both benches for sunbed conversion)  
Adjustable teak table with conversion to sunbed  
Aft cockpit storage bench (N/A with cockpit wetbar)  
Aft deck starboard folding bench  
Aft deck port folding bench  
Safety doors  
U-Deck cockpit floor & swim platform decking  
Teak cockpit floor & swim platform  
Eshtec decking on cockpit floor, side decks & swim platforms  
Bow ladder with wooden platform  
Aft cockpit removable tent (incl. carbon fiber poles)  
Removable foredeck tent (incl. carbon fiber poles)  
Removable folding cockpit table with conversion to sunbed - forward  
Anchor locker cushions  
Rod holders on side decks - 4  
Oxygenated livewell - requires wetbar  
Outriggers  
Sea water pump for deck wash  
Waterski pole

**COCKPIT WETBAR**

Cockpit wetbar (N/A with aft cockpit storage seating)  
Refrigerator - 50L  
Additional refrigerator - 50L  
Single gas hob

**SUV PILOTHOUSE**

Interior seating adjustable table with conversion to double bed  
Wooden floors  
Interior curtains

**INTERIOR**

Forward and aft cabin separation with curtains  
Removable carpet set

**GALLEY**

Refrigerator - 50L  
Microwave

**HEAD**

Optional manual toilet with seawater system with 50L holding tank & deck pump-out  
Upgrade to electrical toilet with seawater system with 50L holding tank & deck pump-out

**MECHANICAL EQUIPMENT**

Bow thruster  
Trim tabs  
Fresh water system in head and wetbar sink and faucet with 100 Liter tank and stainless steel deck filler  
Cockpit shower - requires fresh water system  
Hot water system, 220V  
Offshore fuel tank, upgrade to 600 Lt.  
Windscreen wash  
Webasto diesel heating system  
Diesel generator - 4W  
Air Conditioning - 16000 BTU (only with shore power or generator)  
Air Conditioning - 24000 BTU (only with shore power or generator)  
Engine room thermal camera  
Volvo Penta Aquamatic Joystick Docking Station  
Volvo Penta Aquamatic Dynamic Positioning System  
Mercury Vesselview 502 5" Multi Display  
Mercury JPO joystick skyhook for twin engines  
Seakeeper stabilization system



## OPTIONS

### ELECTRICAL SYSTEMS & LIGHTING

Additional 12V battery  
Chain counter  
Search light  
Shore power connection 220V & Battery charger (25A)  
Inverter 12v/220v 1200W  
Cockpit LED courtesy lights  
Solar Energy Pack, 1 x 100W  
Underwater lights

### NAVIGATION SYSTEMS

Navigation Package 1 - GARMIN GPSMAP 922 - 1 x 9" MFD  
Chartplotter, Transducer, Navionics Map Package, VHF 115i  
Navigation Package 2 - GARMIN GPSMAP 1222 - 1 x 12" MFD  
Chartplotter, Transducer, Navionics Map Package, VHF 115i  
Navigation Package 3 - GARMIN GPSMAP 1222 - 2 x 12" MFD  
Chartplotter, Transducer, Navionics Map Package, VHF 215i  
VHF - GARMIN 115i  
Transducer - depth & temperature  
GARMIN GPSMAP 922 - 1 x 9" MFD Chartplotter  
GARMIN GPSMAP 1222 - 1 x 12" MFD Chartplotter  
GARMIN GPSMAP 922 - 2 x 9" MFD - Chartplotter  
GARMIN GPSMAP 1222 - 2 x 12" MFD - Chartplotter  
GARMIN Radar GMR 18 HD+  
GARMIN Fishfinder T 1500W CHIRP Sonar Module

### ENTERTAINMENT SYSTEMS

Fusion Marine Stereo Sound System, Control Unit RA70 with  
bluetooth & 2 speakers  
Fusion Sound System Upgrade 1 - additional 2 speakers (requires  
Fusion Sound System)  
Fusion Sound System Upgrade 2 - 5 ch. Amplifier & subwoofer  
(requires Fusion system & Fusion upgrade 1)  
22" TV system in master cabin  
TV antenna

### COVERS

Aft cockpit cover  
Forward cockpit cover  
Wetbar cover  
Console Cover

### ANCHORING & MOORING

Anchoring Kit - 12 kg galvanized Delta type anchor & 6 mm. 40m.  
galvanized calibrated chain  
Mooring Kit - 4 x 12 M 14mm ropes for docking, 4 fenders with 4  
Dromeas Yachts fender covers

## WOODWORK FINISH SELECTION

Limy Oak (Standard)



Platinum



Walnut



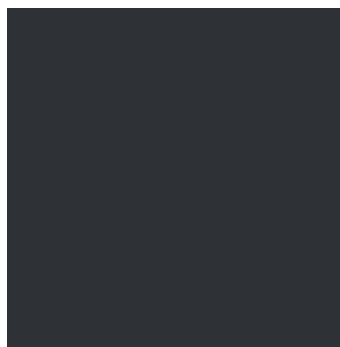
## HULL COLOUR SELECTION

Pure White (Standard)  
RAL 9010

Military Light Gray  
RAL 7030

Anthracite Gray  
RAL 7011

Fisherman's Blue  
RAL 5026



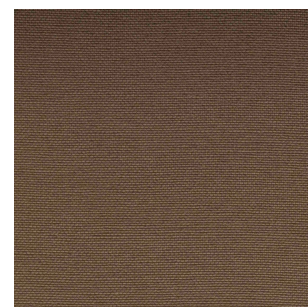
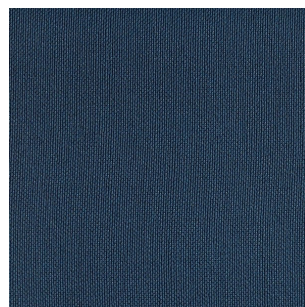
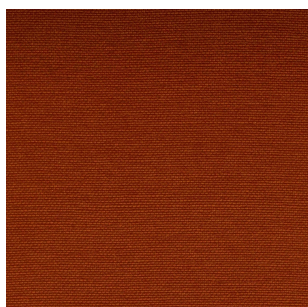
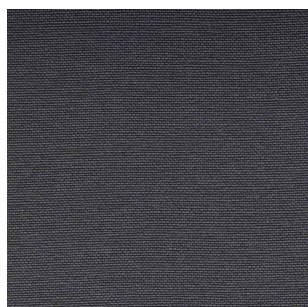
## SILVERTEX UPHOLSTERY SELECTION

Titanium

Mandarin

Jet

Taupe



Transport, crane costs & boat launch preparations are not included. The presented models are not binding. Dromeas Yachts reserves the right to change the prices and the equipment without prior information, as well as the technical data our models. The performance of the boat vary on the equipment installed. All taxes, registration, customs, marina and etc costs are customers' responsibility. All rights reserved. Dromeas Yachts 2021