

# DROMEAS YACHTS

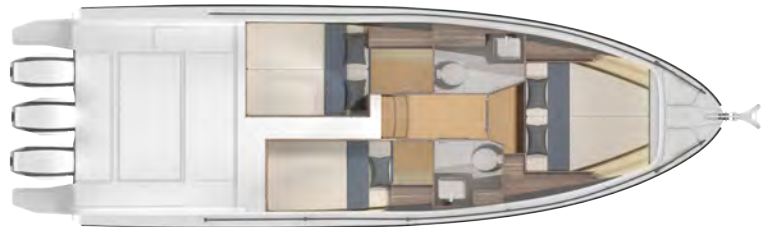
## D38 HARDTOP TECHNICAL SPECIFICATIONS

**D38  
HARD  
TOP**



### GENERAL CHARACTERISTICS

Length Overall	11,75 m
Hull Length	10,55 m
Beam	3,60 m
Draft	0,95 m
Light Displacement(w/o Engine)	6850 kg
Fuel Capacity	850 L
Fresh Water Capacity	135 L
Min. Engine Capacity	900 HP
Max. Engine Capacity	1350 HP
Max. Speed	50+ Knots
Cabins	2 / 3
Berths	6 / 8
Max People on Board	10 / 12
Design Category	CE Cat. B / C
Designer	Klan Studio & Dromeas Design Studio



## STANDARD EQUIPMENT

### CONSTRUCTION

#### HULL

- White gelcoat
- Vinylester skin coat
- One-shot vacuum infused epoxyglass sandwich hull
- PVC foam cored light hull & deck construction
- Vacuum infused epoxyglass foam cored bulkheads
- Carbon-fiber reinforced closed cell PU Formed GRP spider grid
- Fully non-wood structural construction

#### DECK

- White gelcoat
- Non-skid deck
- Vinylester skin coat
- One-shot vacuum infused epoxyglass sandwich hull
- PVC foam cored light hull & deck construction
- Vacuum infused epoxyglass foam cored bulkheads
- Carbon-fiber reinforced closed cell PU Formed GRP spider grid
- Fully non-wood structural construction

#### DECK GEAR

- Heavy duty rubrail
- Non-Skid decking
- Self draining anchor locker
- 2 forward stainless steel mooring cleats
- 2 midship stainless steel cleats
- 2 aft stainless steel mooring cleats
- 2 aft cleats for cross docking
- Self draining deck & lockers
- Stainless steel bow roller
- Electrical windlass & remote
- Stainless steel pulpit
- Stainless steel deck hand rails
- Stainless steel hardtop handrails
- Swimming platform
- Folding swim ladder
- Life raft storage area

#### EXTERIOR COMFORT

- Teak cockpit floor & swim platform
- Aft cockpit L bench
- Storage lockers under the cockpit floor
- Storage locker in the cockpit table
- Adjustable wood cockpit table
- Cockpit shower (Hot & cold water)

#### INTERIOR LAYOUT OPTIONS

- 2 Cabins + 2 head + 1 storage layout - Standard
- 3 Cabins + 2 head - Optional

#### SALOON

- Sliding glass aft door
- Large sliding electrical roof
- Ceiling LED lights
- Helm station lateral door
- Dining area on port
- Saloon side sliding window - port
- Saloon side sliding window - starboard
- Saloon curtains

#### HELM STATION

- Integrated performance console
- Dashboard with engine control & space for Nav. station
- Electrical instrument switches
- Pilot bolster bench with storage
- Co-Pilot bench
- Compass
- Horn
- Fuel Gauges
- Cupholders
- Console Handrails

#### GALLEY

- Stainless steel sink
- Corian counter top
- Gas stove burners - twin
- Gas Oven
- Refrigerator
- Cutlery drawer
- Cupboards & storage
- Drawers for kitchenware
- Waste bin
- Storage
- Bar storage

#### FORWARD CABIN

- Hull windows including opening porthole
- Opening deck hatch
- Double berth
- Storage under bed
- Access to bowthruster under bed
- Storage organizers
- Reading lights
- Hanging lockers
- Dressing table
- Bench seat including storage
- Mirror
- USB plugs

#### AFT CABIN

- Hull windows including porthole
- Double berth
- Under bed storage
- Deck hatch to the salon
- Hanging locker
- Mirror
- USB plugs
- Bench seat including storage

#### MAIN HEAD

- Access from companionway
- Hull window including opening porthole
- Opening porthole
- Shower
- Separate shower
- Manual toilet with seawater system with 80L holding tank & deck pump-out
- Sink
- Mirror
- Cupboards & storage

#### DAY HEAD (Optional)

- Hull windows
- Access from hallway
- Manual toilet with seawater system
- Sink
- Shower
- Mirror
- Storage Compartment

#### STORAGE & UTILITY SPACES

- Access to technical compartment
- Floor storage and lockers
- Utility Drawers
- Mattress for optional cabin



**MECHANICAL EQUIPMENT**

Volvo Penta trip computer  
 Hydraulic steering  
 Stainless steel fixed fuel tank with deck fillers  
 Manual & electrical bilge pumps  
 Black water deck pump-out (with wc system)  
 Engine room natural ventilation  
 Air extraction pumps in engine room (included with inboard engines)  
 Automatic Fire Fighting system in Engine room (included with inboard engines)  
 Fresh water system  
 Water heater system (only with shore power or generator)

**ELECTRICAL SYSTEMS & LIGHTING**

Start batteries  
 Service batteries  
 Electrical systems control panel  
 Navigation lights  
 Windscreen wipers  
 Screen wash  
 Shore power connection 220V & Battery Charger (40A)  
 12 V plugs  
 220 V Plugs  
 LED interior lights  
 LED interior indirect lights

**PACKAGES****PREMIERE PACK**

Aft cockpit removable tent (incl. Poles)  
 Foredeck sunbed  
 Removable carpet set - saloon & cabins  
 Adjustable dining table convertible into bed with black-out curtains  
 Microwave - 220 V (requires inverter and/or shorepower)  
 Upgrade to electrical toilet with seawater system  
 Cockpit LED Courtesy Lights

**TRIM PACK**

Bowthruster  
 Trim tabs

**OFFSHORE PACK**

Non-oxygenated livewell  
 Oxygenated livewell  
 Rod holders on side decks - 4  
 Rocket launchers - 3  
 Tackle box storages in cockpit  
 Knee pads along the bulwark

**OPTIONS****ANCHORING & MOORING**

**Anchoring Kit** - Galvanized Delta type anchor & chain  
**Mooring Kit** - 4 x 10 M 16mm ropes for docking, 6 fenders with 6 Dromeas Yachts fender covers

Stern anchor roller with electric winlass and remote control  
 Ultra Marine Anchor & Swivel upgrade

**DECK GEAR**

Bow ladder  
 Stainless steel roof rack with radar arch  
 Cockpit dive door  
 Extended swim platform (only with inboard engines)  
 Wooden chocks for tender storage (only with inboard engines)  
 Hydraulic swim platform (with std. swim platform)  
 Telescopic hydraulic gangway (only with inboard engines)  
 Carbon fiber folding pasarelle

**EXTERIOR COMFORT**

Teak on side decks  
 Eshtec decking on cockpit floor, side decks & swim platforms  
 Drawer type refrigerator in cockpit, 20 Liter  
 Cockpit wetbar  
 Electric grill - 220V (only with wetbar)  
 Cockpit wetbar refrigerator  
 Aft cockpit removable tent (incl. Poles)  
 Aft cockpit electrical tent  
 Removable foredeck tent  
 Foredeck sunbed  
 Foredeck sunbed with lifting backrest  
 Sea water pump for deck wash  
 Windows external blackout curtains  
 Waterski pole

**FISHING**

Non-oxygenated livewell  
 Oxygenated livewell  
 Rod holders on side decks - 4  
 Rocket launchers - 3  
 Tackle box storages in cockpit  
 Outriggers

**INTERIOR COMFORT**

2 Cabins + 1 head + 1 storage layout  
 3 Cabins + 1 head + 1 storage layout  
 3 Cabins + 2 head layout  
 Removable carpet set - saloon & cabins  
 Wood interior floors - Saloon & cabins

**SALOON**

Adjustable dining table convertible into bed with black-out curtains

**GALLEY**

Electric cooktop - 220 V (requires inverter and/or shorepower)  
 Additional refrigerator  
 Dishwasher  
 Microwave - 220 V (requires inverter and/or shorepower)  
 Overhead storage lockers

**FORWARD CABIN**

Additional opening deck hatch  
 Overhead storage lockers

**AFT CABIN**

Additional opening porthole

**MAIN HEAD**

Additional opening porthole  
 Upgrade to electrical toilet with seawater system

## OPTIONS

### STORAGE & UTILITY SPACES

Refrigerator - 80 L  
Freezer - 40 L  
Wine cellar

### MECHANICAL EQUIPMENT

Bowthruster  
Mercury Skyhook Anchor with joystick piloting - triple installation  
Mercury Skyhook Anchor with joystick piloting - quad installation  
Volvo Penta Aquamatic Joystick Docking system (only for Aquamatic engines)  
Additional Volvo Penta Docking Joystick for cockpit (only for Aquamatic & IPS Systems with console joystick)  
Additional Volvo Penta Docking Joystick for flybridge (only for Aquamatic with console joystick)  
Air conditioning System - 28000 BTU (only with shore power & generator)  
Air conditioning System - 36000 BTU (only with shore power & generator)  
7 kW Diesel Generator  
9 kW Diesel Generator  
Forced air heating system - Webasto  
Thermal Camera in Engine Room  
Seakeeper stabilization system  
Trim tabs

### ELECTRICAL SYSTEMS & LIGHTING

Additional 12V battery  
Chain Counter & control at helm  
Search Light  
Inverter 12v/220v 2000W  
Cockpit LED Lights  
Cockpit LED Courtesy Lights  
Side deck LED Courtesy Lights  
Solar Energy Pack, 3 x 100W  
Underwater Lights

### NAVIGATION INSTRUMENTS

Navigation Package 3 - GARMIN GPSMAP 1222 - 12" MFD Chartplotter, Transducer, Navionics Map Package, VHF 210i  
Navigation Package 4 - GARMIN GPSMAP 1622 - 16" MFD Chartplotter, Transducer, Navionics Map Package, VHF 210i  
Navigation Package 7 - 2 x GARMIN GPSMAP 922 - 9" MFD Chartplotter, Transducer, Navionics Map Package, VHF 210i  
Navigation Package 8 - 2 x GARMIN GPSMAP 1222 - 12" MFD Chartplotter, Transducer, Navionics Map Package, VHF 310i  
VHF - GARMIN 210i  
VHF - GARMIN 310i  
Intelliducer - Depth & Temperature  
GARMIN GPSMAP 922 - 9" MFD Chartplotter  
GARMIN GPSMAP 1222 - 12" MFD Chartplotter  
GARMIN GPSMAP 1622 - 16" MFD Chartplotter  
GARMIN GPSMAP 922 - 2 x 9" MFD - Chartplotter  
GARMIN GPSMAP 1222 - 2 x 12" MFD Chartplotter  
GARMIN GPSMAP 1622 - 2 x 16" MFD - Chartplotter  
GARMIN Radar GMR 18  
GARMIN Radar GMR 24  
GARMIN Sonar Module

### ENTERTAINMENT SYSTEMS

Fusion Marine Stereo Sound System, Control Unit & 4 speakers in cockpit  
Fusion Sound System Upgrade 3 - additional 4 speakers & 2 x 4 ch Amplifier (requires Fusion Sound System)  
Fusion Sound System Upgrade 4 - 1 subwoofer & 5 ch Amplifier (requires upgrade 3)  
Additional control unit, cabin  
Additional control unit, cockpit  
Cabin 22" LED TV & DVD Player  
Retractable Salon 23" LED TV & DVD Player  
Saloon 42" LED TV & DVD Player  
COVERS  
Aft cockpit cover  
Forward cockpit cover  
Fixed cockpit canopy, Charcoal colour  
Cockpit closing, charcoal colour (requires fixed canopy)





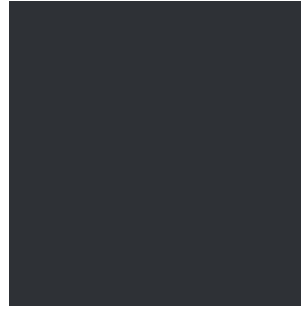
**HULL COLOUR OPTIONS**

Pure White (Standard)  
RAL 9010

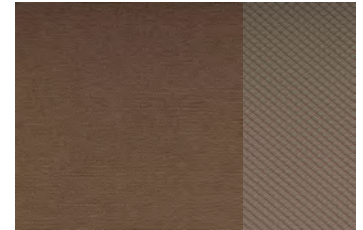
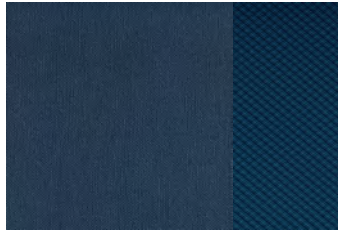
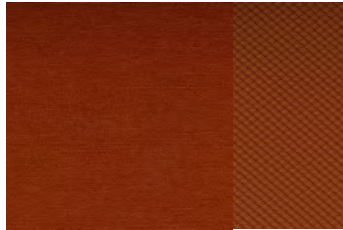
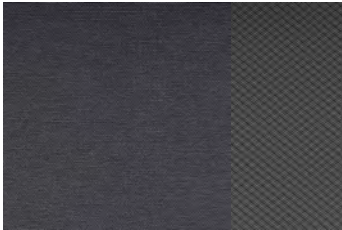
Military Gray  
RAL 7030

Special Ops Antracite Gray  
RAL 7011

Fisherman's Navy Blue  
RAL 5026

**UPHOLSTERY COLOUR OPTIONS**

Silvertex & Diamente Combinations

**UPHOLSTERY UPGRADE OPTIONS**

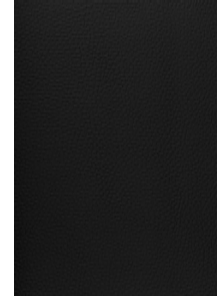
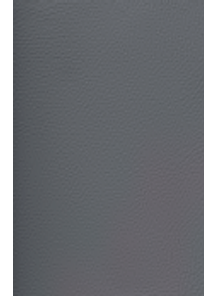
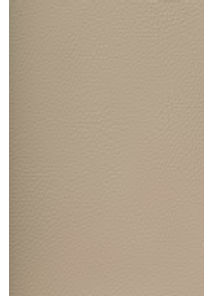
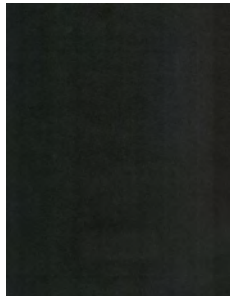
Gray  
Niroxx

Anthracite

White Cap

Beluga Leather  
Dove Gray

Blackbeard

**INTERIOR WOODWORK FINISH OPTIONS**

Limy Oak Finish (Standard)

Platinum Finish

Walnut Finish

**RECOMMENDED ENGINE OPTIONS**

Mercury VERADO 3 x 350 HP

Mercury VERADO 3 x 400 HP

Evinrude G2 3 x 300 HP

Evinrude G2 4 x 300 HP

Seven Marine 2 X 517 HP

Seven Marine 2 x 627 HP

Volvo Penta Aquamatic 2 x 300 HP - D4 AQ

Volvo Penta Aquamatic 2 x 340 HP - D6 AQ

Volvo Penta IPS 450 - 2 x 340 HP D6 + Joystick

Volvo Penta IPS 500 - 2 x 380 HP D6 + Joystick

Indicative Q4 Specifications & Public Prices - from 1 Oct. 2019

Transport and crane costs, preparing the boat and antifouling are not included. The presented models are not binding. These prices are recommended ex-works with standard equipment. These prices are recommended ex-works with standard equipment. We reserve the right to change the prices without prior information, as well as the technical data our models. The performance of the boat vary on the equipment installed. All taxes, registration, customs, marina and etc costs are customers' responsibility. Balance due 10 business days before delivery from factory. All rights reserved. Dromeas Yachts 2019

Dromeas Yatçılık Sanayi Tic. Ltd. Şti.  
Simgce Cad. No:3/1 Yazıbaşı Torbalı / İzmir  
35850 - TURKEY

Tel: +90 232 853 75 72 Fax: +90 232 853 75 73

**DROMEAS YACHTS**

[www.dromeasyachts.com](http://www.dromeasyachts.com)  
info@dromeasyachts.com  
instagram: dromeasyachts  
#FORTHETOLOVEOFTHESA