

# DROMEAS YACHTS

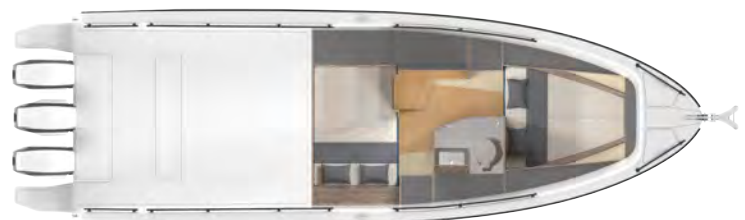
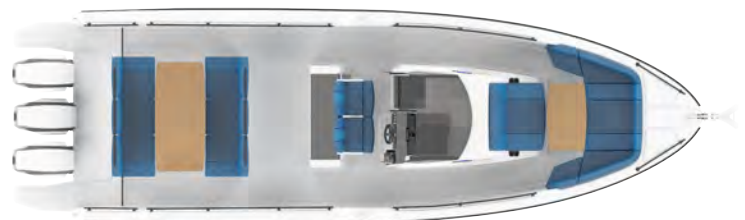
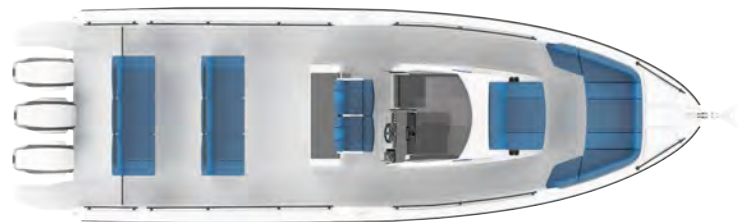
## D38 CHASER TECHNICAL SPECIFICATIONS

**D38**  
CENTER  
CONSOLE



### GENERAL CHARACTERISTICS

Length Overall	11,75 m
Hull Length	10,55 m
Beam	3,60 m
Draft	0,95 m
Light Displacement(w/o Engine)	4840 kg
Fuel Capacity	850 L
Fresh Water Capacity	135 L
Min. Engine Capacity	800 HP
Max. Engine Capacity	1350 HP
Max. Speed	50+ Knots
Cabins	1
Berths	2 / 4
Max People on Board	10 / 12
Design Category	CE Cat. B / C
Designer	Klan Studio & Dromeas Design Studio



## STANDARD EQUIPMENT

### CONSTRUCTION

#### HULL

- White gelcoat
- Vinylester skin coat
- One-shot vacuum infused epoxyglass sandwich hull
- PVC foam cored light hull & deck construction
- Vacuum infused epoxyglass foam cored bulkheads
- Carbon-fiber reinforced closed cell PU Formed GRP spider grid
- Fully non-wood non-polyester structural construction

#### DECK

- White gelcoat
- Non-skid deck
- Vinylester skin coat
- One-shot vacuum infused epoxyglass sandwich hull
- PVC foam cored light hull & deck construction
- Vacuum infused epoxyglass foam cored bulkheads
- Carbon-fiber reinforced closed cell PU Formed GRP spider grid
- Fully non-wood non-polyester structural construction

#### DECK GEAR

- Heavy duty rubrail
- Non-Skid decking
- Self draining anchor locker
- 2 forward stainless steel mooring cleats
- 2 midship stainless steel cleats
- 2 aft stainless steel mooring cleats
- Self draining deck & lockers
- Stainless steel bow roller
- Electrical windlass & remote
- Stainless steel pulpit
- Stainless steel cockpit grab rails
- Swimming platform
- Folding swim ladder
- Life raft storage area

#### EXTERIOR COMFORT

- T-Top, in black with LED lighting
- Aft cockpit booth bench converting to sunbed
- Storage lockers under the cockpit floor
- Storage locker in the cockpit sofa
- Adjustable wood cockpit table
- Cockpit shower (Hot & cold water)
- Foredeck cushions

#### WETBAR

- Stainless steel sink and faucet
- Drawers for kitchenware
- Waste bin
- Storage

#### INTERIOR COMFORT

- 1 Cabin + 1 Head + 1 storage layout
- SALOON
- Sliding companionway door
- Ceiling LED lights

#### HELM STATION

- Integrated performance console
- Dashboard with engine control & space for Nav. station
- Electrical instrument switches
- Pilot and co-pilot seats
- Compass
- Horn
- Fuel Gauges
- Cupholders
- Console Handrails

### FORWARD CABIN

- Hull windows including opening porthole
- Opening deck hatch
- Double berth
- Storage under bed
- Access to bowthruster under bed
- Storage organizers
- Reading lights
- Hanging lockers
- Bench seat including storage
- Mirror
- USB plugs

### AFT CABIN (Optional)

- Double berth
- Hanging locker
- Mirror
- USB plugs

### MAIN HEAD

- Access from companionway
- Hull window including opening porthole
- Opening porthole
- Shower
- Manual toilet with seawater system with 80L holding tank & deck pump-out
- Sink
- Mirror
- Cupboards & storage

### STORAGE & UTILITY SPACES

- Access to technical compartment
- Floor storage and lockers
- Mattress for optional cabin

### MECHANICAL EQUIPMENT

- Volvo Penta trip computer (included with inboard engines)
- Hydraulic steering
- Stainless steel fixed fuel tank with deck fillers
- Manual & electrical bilge pumps
- Black water deck pump-out (with wc system)
- Engine room natural ventilation
- Air extraction pumps in engine room (included with inboard engines)
- Automatic Fire Fighting system in Engine room (included with inboard engines)
- Fresh water system
- Water heater system (only with shore power or generator)

### ELECTRICAL SYSTEMS & LIGHTING

- Start batteries
- Service batteries
- Electrical systems control panel
- Navigation lights
- Windscreen wipers
- Screen wash
- Shore power connection 220V & Battery Charger (25A)
- 12 V plugs
- LED interior indirect lights

## PACKAGES

### PREMIERE PACK

Aft cockpit removable tent (incl. Poles)  
Removable carpet set - saloon & cabins  
Microwave - 220 V (requires inverter and/or shorepower)  
Refrigerator  
Upgrade to electrical toilet with seawater system  
Cockpit LED Courtesy Lights

### TRIM PACK

Bowthruster  
Trim tabs

### OFFSHORE PACK

Non-oxygenated livewell  
Oxygenated livewell  
Rod holders on side decks - 4  
Rocket launchers - 3  
Tackle box storages in cockpit  
Knee pads along the bulwark

## OPTIONS

### ANCHORING & MOORING

**Anchoring Kit** - Galvanized Delta type anchor & chain  
**Moorings Kit** - 4 x 10 M 16mm ropes for docking, 6 fenders with 6 Dromeas Yachts fender covers

Stern anchor roller with electric winlass and remote control  
Ultra Marine Anchor & Swivel upgrade

### DECK GEAR

Bow ladder  
2 aft cleats for cross docking  
Stainless steel deck hand rails  
Stainless steel roof rack with radar arch  
Cockpit dive door  
Extended swim platform (only with inboard engines)  
Wooden chocks for tender storage (only with inboard engines)  
Hydraulic swim platform (with std. swim platform)  
Telescopic hydraulic gangway (only with inboard engines)  
Carbon fiber folding pasarelle

### EXTERIOR COMFORT

T-Top stainless steel roll bar arch with 4 rod holders  
Teak cockpit floor & swim platform  
Eshtec decking on cockpit floor, side decks & swim platforms  
Aft cockpit sunbed (requires table)  
Foredeck adjustable teak table with conversion to sunbed  
Drawer type refrigerator in cockpit, 20 Liter  
Aft cockpit removable tent (incl. Poles)  
Aft cockpit electrical tent  
Removable foredeck tent  
Sea water pump for deck wash  
Waterski pole

### FISHING

Non-oxygenated livewell  
Oxygenated livewell  
Rod holders on side decks - 4  
Rocket launchers - 3  
Tackle box storages in cockpit  
Outriggers

### WETBAR

Refrigerator  
Additional refrigerator  
Gas Burner stove  
Electric Grill - 220V

### INTERIOR COMFORT

1 Cabin + 1 Head + 1 storage layout  
2 Cabin + 1 Head layout  
Forward and aft cabin separation with curtains  
Removable carpet set - saloon & cabins  
Wood interior floors - Saloon & cabins

### GALLEY

Microwave - 220 V (requires inverter and/or shorepower)  
MAIN HEAD  
Upgrade to electrical toilet with seawater system

### STORAGE & UTILITY SPACES

Refrigerator - 80 L  
Wine cellar

### MECHANICAL EQUIPMENT

Bowthruster  
Evinrude iDock System - for twin engine installations  
Mercury Vesselview 5" Multi Touch (instead of std. Smart craft dials)  
Mercury Vesselview 7" Multi Touch (instead of std. Smart craft dials)  
Mercury Skyhook Anchor with joystick piloting - twin installation  
Mercury Skyhook Anchor with joystick piloting - triple installation  
Mercury Skyhook Anchor with joystick piloting - quad installation  
Volvo Penta Aquamatic Joystick Docking system (only for Aquamatic engines)  
Additional Volvo Penta Docking Joystick for cockpit (only for Aquamatic & IPS Systems with console joystick)  
Additional Volvo Penta Docking Joystick for flybridge (only for Aquamatic with console joystick)  
Air conditioning System - 16000 BTU (only with shore power or generator)  
Air conditioning System - 28000 BTU (only with shore power & generator)  
7 kW Diesel Generator  
Forced air heating system - Webasto  
Thermal Camera in Engine Room  
Seakeeper stabilization system  
Trim tabs  
Humphree interceptor system with automatic trim





**ELECTRICAL SYSTEMS & LIGHTING**

Additional 12V battery  
 Chain Counter & control at helm  
 Search Light  
 Inverter 12v/220v 700W  
 Cockpit LED Courtesy Lights  
 Solar Energy Pack, 2 x 100W  
 Underwater Lights

**NAVIGATION INSTRUMENTS**

Navigation Package 3 - GARMIN GPSMAP 1222 - 12" MFD Chartplotter, Transducer, Navionics Map Package, VHF 210i  
 Navigation Package 4 - GARMIN GPSMAP 1622 - 16" MFD Chartplotter, Transducer, Navionics Map Package, VHF 210i  
 Navigation Package 7 - 2 x GARMIN GPSMAP 922 - 9" MFD Chartplotter, Transducer, Navionics Map Package, VHF 210i  
 Navigation Package 8 - 2 x GARMIN GPSMAP 1222 - 12" MFD Chartplotter, Transducer, Navionics Map Package, VHF 310i  
 VHF - GARMIN 210i  
 Intelliducer - Depth & Temperature  
 GARMIN GPSMAP 922 - 9" MFD Chartplotter  
 GARMIN GPSMAP 1222 - 12" MFD Chartplotter  
 GARMIN GPSMAP 1622 - 16" MFD Chartplotter  
 GARMIN GPSMAP 922 - 2 x 9" MFD - Chartplotter  
 GARMIN GPSMAP 1222 - 2 x 12" MFD Chartplotter  
 GARMIN GPSMAP 1622 - 2 x 16" MFD - Chartplotter  
 GARMIN Radar GMR 18  
 GARMIN Radar GMR 24  
 GARMIN Sonar Module

**ENTERTAINMENT SYSTEMS**

Fusion Marine Stereo Sound System, Control Unit & 4 speakers in cockpit  
 Fusion Sound System Upgrade 3 - additional 4 speakers & 2 x 4 ch Amplifier (requires Fusion Sound System)  
 Fusion Sound System Upgrade 4 - 1 subwoofer & 5 ch Amplifier (requires upgrade 3)  
 Additional control unit, cabin  
 Additional control unit, cockpit  
 Cabin 22" LED TV & DVD Player

**COVERS**

Canopy closing under T-Top in charcoal  
 Aft cockpit cover  
 Forward cockpit cover  
 Wetbar cover  
 Console cover



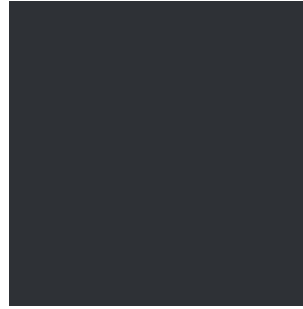
**HULL COLOUR OPTIONS**

Pure White (Standard)  
RAL 9010

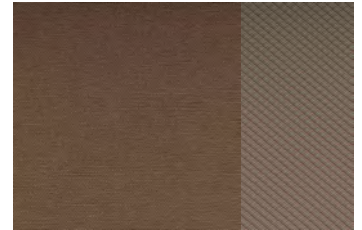
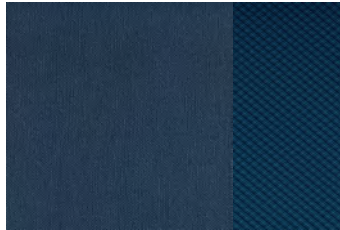
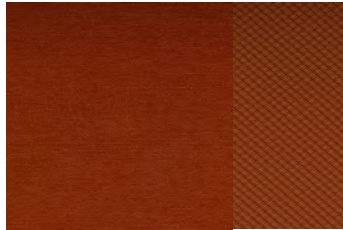
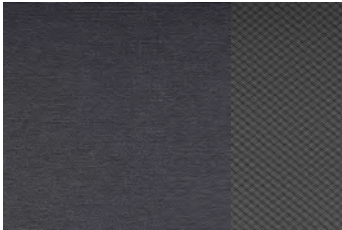
Military Gray  
RAL 7030

Special Ops Antracite Gray  
RAL 7011

Fisherman's Navy Blue  
RAL 5026

**UPHOLSTERY COLOUR OPTIONS**

Silvertex & Diamente Combinations

**UPHOLSTERY UPGRADE OPTIONS**

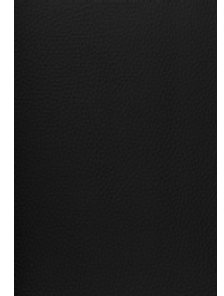
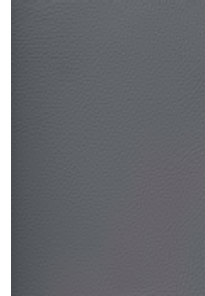
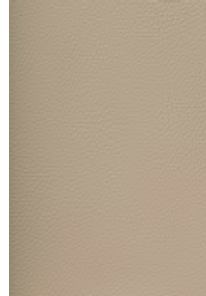
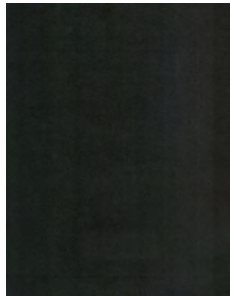
Gray  
Niroxx

Anthracite

White Cap

Beluga Leather  
Dove Gray

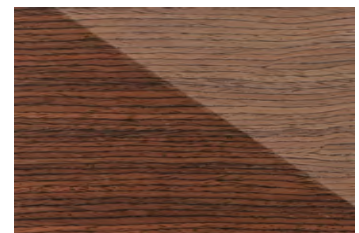
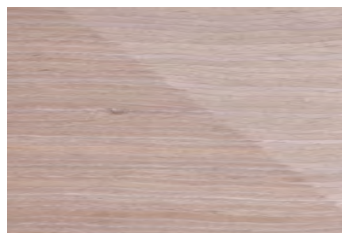
Blackbeard

**INTERIOR WOODWORK FINISH OPTIONS**

Limy Oak Finish (Standard)

Platinum Finish

Walnut Finish

**RECOMMENDED ENGINE OPTIONS**

Mercury VERADO 2 x 400 HP

Mercury VERADO 3 x 300 HP

Evinrude G2 3 x 300 HP

Evinrude G2 4 x 300 HP

Seven Marine 2 X 517 HP

Seven Marine 2 x 627 HP

Volvo Penta Aquamatic 2 x 270 HP - D4 AQ

Volvo Penta Aquamatic 2 x 300 HP - D6 AQ

Volvo Penta IPS 450 - 2 x 340 HP D6 + Joystick

Volvo Penta IPS 500 - 2 x 380 HP D6 + Joystick

Indicative Q4 Specifications & Public Prices - from 1 Oct. 2019

Transport and crane costs, preparing the boat and antifouling are not included. The presented models are not binding. These prices are recommended ex-works with standard equipment. These prices are recommended ex-works with standard equipment. We reserve the right to change the prices without prior information, as well as the technical data our models. The performance of the boat vary on the equipment installed. All taxes, registration, customs, marina and etc costs are customers' responsibility. Balance due 10 business days before delivery from factory. All rights reserved. Dromeas Yachts 2019

Dromeas Yatçılık Sanayi Tic. Ltd. Şti.  
Simgce Cad. No:3/1 Yazıbaşı Torbalı / İzmir  
35850 - TURKEY

Tel: +90 232 853 75 72 Fax: +90 232 853 75 73



[www.dromeasyachts.com](http://www.dromeasyachts.com)  
info@dromeasyachts.com  
instagram: dromeasyachts  
#FORTHETOLOVEOFTHESEA