

DROMEAS YACHTS

D33 HARDTOP TECHNICAL SPECIFICATIONS

**D33
HARD
TOP**



GENERAL CHARACTERISTICS

Length Overall	9,80 m
Hull Length	8,98 m
Beam	3,08 m
Draft - hull	0,55 m
Light Displacement(w/o Engine)	4450 kg
Fuel Capacity	550 L
Fresh Water Capacity	120 L
Min. Engine Capacity	400 HP
Max. Engine Capacity	800 HP
Max. Speed	52+ Knots
Cabins	1
Berths	2
Max People on Board	8 / 10
Design Category	CE Cat. B / C
Designer	Klan Studio & Dromeas Design Studio



STANDARD EQUIPMENT

CONSTRUCTION

HULL

- White gelcoat
- Vinylester skin coat
- One-shot vacuum infused epoxyglass sandwich hull
- PVC foam cored light hull & deck construction
- Vacuum infused epoxyglass foam cored bulkheads
- Carbon-fiber reinforced closed cell PU Formed GRP spider grid
- Fully non-wood structural construction

DECK

- White gelcoat
- Non-skid deck
- Vinylester skin coat
- One-shot vacuum infused epoxyglass sandwich hull
- PVC foam cored light hull & deck construction
- Vacuum infused epoxyglass foam cored bulkheads
- Carbon-fiber reinforced closed cell PU Formed GRP spider grid
- Fully non-wood structural construction

DECK GEAR

- Heavy duty rubrail
- Non-Skid decking
- Self draining anchor locker
- 2 forward stainless steel mooring cleats
- 2 midship stainless steel cleats
- 2 aft stainless steel mooring cleats
- Self draining deck & lockers
- Stainless steel bow roller
- Stainless steel pulpit
- Stainless steel deck hand rails
- Stainless steel handtop handrails
- Swimming platform
- Folding swim ladder

EXTERIOR COMFORT

- Aft folding cockpit bench
- Folding side cockpit benches
- Storage lockers under the cockpit floor
- Storage locker in the cockpit sofa

INTERIOR COMFORT

- 1 Cabin + 1 head layout

SALOON

- Sliding glass aft door
- Large sliding manual roof
- Ceiling LED lights
- Dining area on port
- Saloon side sliding window - port
- Saloon side sliding window - starboard
- Saloon curtains

HELM STATION

- Integrated performance console
- Dashboard with engine control & space for Nav. station
- Electrical instrument switches
- Pilot bolster seat with storage
- Compass
- Horn
- Fuel Gauges
- Cupholders
- Console Handrails

GALLEY

- Stainless steel sink
- Corian counter top
- Refrigerator
- Cutlery drawer
- Cupboards & storage
- Drawers for kitchenware
- Waste bin
- Storage
- Bar storage

FORWARD CABIN

- Hull windows including opening porthole
- Opening deck hatch
- Additional opening deck hatch
- Double berth
- Storage under bed
- Access to bowthruster under bed
- Storage organizers
- Reading lights
- Hanging lockers
- Bench seat including storage
- Mirror
- USB plugs

AFT CABIN

- Optional double berth
- Hanging locker
- Mirror
- USB plugs

MAIN HEAD

- Access from companionway
- Hull window including opening porthole
- Opening porthole
- Shower
- Manual toilet with seawater system with 40L holding tank & deck pump-out
- Sink
- Mirror
- Cupboards & storage

STORAGE & UTILITY SPACES

- Access to technical compartment
- Floor storage and lockers
- Mattress for optional cabin

MECHANICAL EQUIPMENT

- Hydraulic steering
- Stainless steel fixed fuel tank with deck fillers
- Manual & electrical bilge pumps
- Black water deck pump-out (with wc system)
- Fresh water system, 120 Liter

ELECTRICAL SYSTEMS & LIGHTING

- Start batteries 2 x 120 Ah
- Service batteries 1 x 120 Ah
- Electrical systems control panel
- Navigation lights
- Windscreen wipers
- Screen wash
- 12 V plugs
- LED interior lights
- LED interior indirect lights

PACKAGES

COMFORT PACK

Electrical windlass & remote
Cockpit shower
Shore power connection 220V & Battery Charger (25A)

PREMIERE PACK

Adjustable wood cockpit table
Aft cockpit removable tent (incl. Poles)
Foredeck sunbed
Removable carpet set - saloon & cabins
Adjustable dining table convertible into bed with black-out curtains
Gas stove burners - twin
Microwave - 220 V (requires inverter and/or shorepower)
Upgrade to electrical toilet with seawater system
Cockpit LED Courtesy Lights

TRIM PACK

Bowthruster
Water heater system
Trim tabs

OFFSHORE PACK

Non-oxygenated livewell
Oxygenated livewell
Rod holders on side decks - 4
Rocket launchers - 3
Tackle box storages in cockpit
Knee pads along the bulwark



OPTIONS

ANCHORING & MOORING

Anchoring Kit - Galvanized Delta type anchor & chain
Moorings Kit - 4 x 10 M 14mm ropes for docking, 6 fenders with 6 Dromeas Yachts fender covers
Stern anchor roller with electric winlass and remote control
Ultra Marine Anchor & Swivel upgrade

DECK GEAR

Bow ladder
2 aft cleats for cross docking
Electrical windlass & remote
Stainless steel roof rack with radar arch
Cockpit dive door

EXTERIOR COMFORT

Teak cockpit floor & swim platform
Teak on side decks
Eshtec decking on cockpit floor, side decks & swim platforms
Aft cockpit L bench
Adjustable wood cockpit table
Drawer type refrigerator in cockpit, 20 Liter
Cockpit wetbar
Electric grill - 220V (only with wetbar)
Cockpit wetbar refrigerator
Cockpit shower
Aft cockpit removable tent (incl. Poles)
Removable foredeck tent
Foredeck sunbed
Foredeck sunbed with lifting backrest
Sea water pump for deck wash
Windows external blackout curtains
Waterski pole

FISHING

Non-oxygenated livewell
Oxygenated livewell
Rod holders on side decks - 4
Rocket launchers - 3
Tackle box storages in cockpit
Outriggers



INTERIOR COMFORT

- 1 Cabin + 1 head layout
- 2 Cabin + 1 Head layout
- Removable carpet set - saloon & cabins
- Wood interior floors - Saloon & cabins

SALOON

- Large sliding electrical roof
- Adjustable dining table convertible into bed with black-out curtains

GALLEY

- Gas stove burners - twin
- Electric cooktop - 220 V (requires inverter and/or shorepower)
- Additional refrigerator
- Microwave - 220 V (requires inverter and/or shorepower)
- Overhead storage lockers

FORWARD CABIN

- Overhead storage lockers

MAIN HEAD

- Upgrade to electrical toilet with seawater system

MECHANICAL EQUIPMENT

- Bowthruster
- Evinrude iDock System - for twin engine installations
- Mercury Vesselview 5" Multi Touch
- Mercury Vesselview 7" Multi Touch
- Mercury Skyhook Anchor with joystick piloting - twin installation
- Mercury Skyhook Anchor with joystick piloting - triple installation
- Mercury Skyhook Anchor with joystick piloting - quad installation
- Water heater system (only with shore power or generator)
- Air conditioning System - 16000 BTU (only with shore power or generator)
- 4 kW Diesel Generator
- Forced air heating system - Webasto
- Thermal Camera in Engine Room
- Seakeeper stabilization system
- Trim tabs
- Humphree interceptor system with automatic trim
- Pre-Rigging / Single Mercury
- Pre-Rigging / Twin Mercury
- Pre-Rigging / Twin Evinrude

ELECTRICAL SYSTEMS & LIGHTING

- Additional 12V battery
- Chain Counter & control at helm
- Search Light
- Shore power connection 220V & Battery Charger (25A)
- Inverter 12v/220v 700W
- Cockpit LED Lights
- Cockpit LED Courtesy Lights
- Side deck LED Courtesy Lights
- Solar Energy Pack, 2 x 100W
- Underwater Lights

NAVIGATION INSTRUMENTS

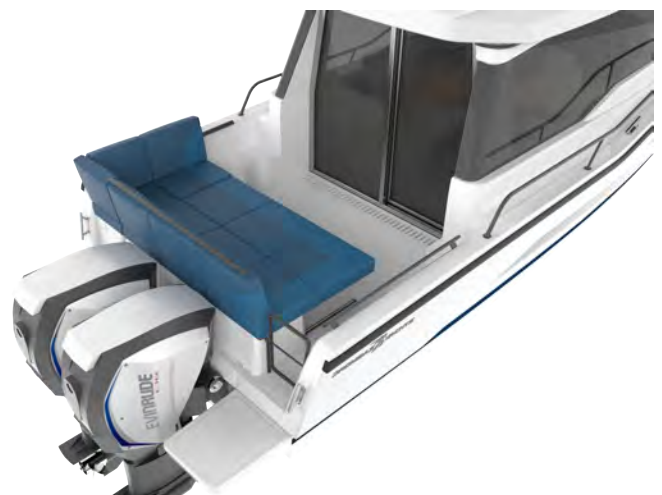
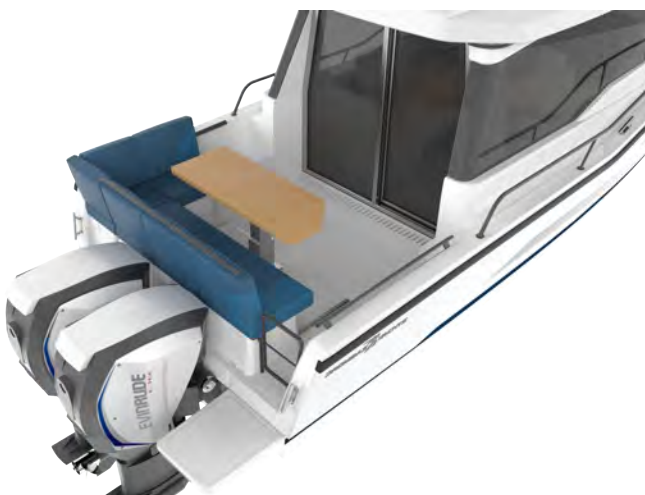
- Navigation Package 1 - GARMIN GPSMAP 922 - 9" MFD Chartplotter, Transducer, Navionics Map Package, VHF 110i
- Navigation Package 2 - GARMIN GPSMAP 1222 - 12" MFD Chartplotter, Transducer, Navionics Map Package, VHF 110i
- Navigation Package 7 - 2 x GARMIN GPSMAP 922 - 9" MFD Chartplotter, Transducer, Navionics Map Package, VHF 210i
- Navigation Package 8 - 2 x GARMIN GPSMAP 1222 - 12" MFD Chartplotter, Transducer, Navionics Map Package, VHF 310i
- VHF - GARMIN 210i
- Intelliducer - Depth & Temperature
- GARMIN GPSMAP 922 - 9" MFD Chartplotter
- GARMIN GPSMAP 1222 - 12" MFD Chartplotter
- GARMIN GPSMAP 1622 - 16" MFD Chartplotter
- GARMIN GPSMAP 922 - 2 x 9" MFD - Chartplotter
- GARMIN GPSMAP 1222 - 2 x 12" MFD Chartplotter
- GARMIN Radar GMR 18
- GARMIN Sonar Module

ENTERTAINMENT SYSTEMS

- Fusion Marine Stereo Sound System, Control Unit & 2 speakers in cockpit
- Fusion Sound System Upgrade 1 - additional 2 speakers & 4 ch Amplifier (requires Fusion Sound System)
- Fusion Sound System Upgrade 2 - 1 subwoofer & 5 ch Amplifier (requires upgrade 1)
- Additional control unit, cockpit
- Cabin 22" LED TV & DVD Player

COVERS

- Aft cockpit cover
- Forward cockpit cover
- Fixed cockpit canopy, Charcoal colour
- Cockpit closing, charcoal colour (requires fixed canopy)



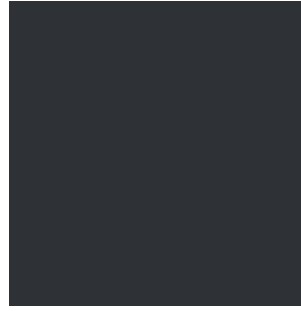
HULL COLOUR OPTIONS

Pure White (Standard)
RAL 9010

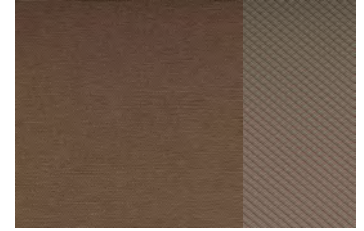
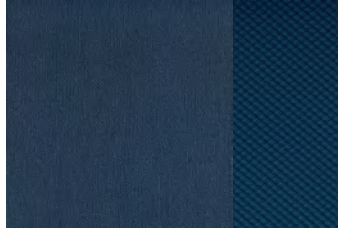
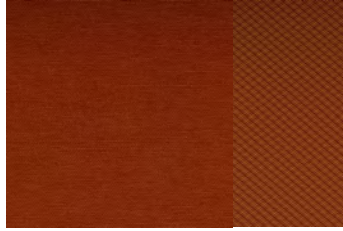
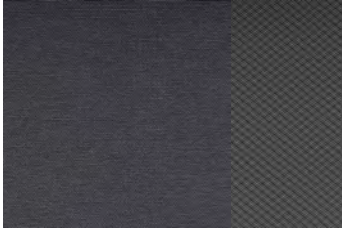
Military Gray
RAL 7030

Special Ops Antracite Gray
RAL 7011

Fisherman's Navy Blue
RAL 5026

**UPHOLSTERY COLOUR OPTIONS**

Silvertex & Diamente Combinations

**UPHOLSTERY UPGRADE OPTIONS**

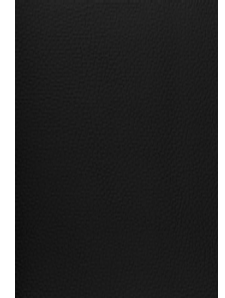
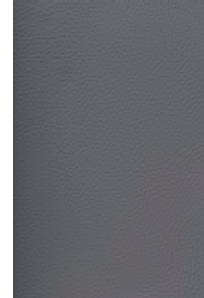
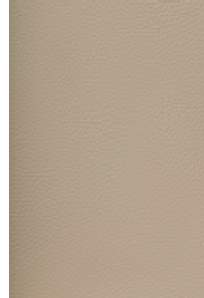
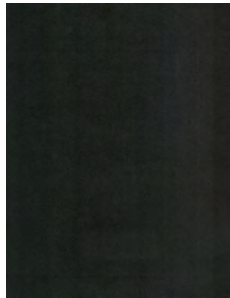
Gray
Niroxx

Anthracite

White Cap

Beluga Leather
Dove Gray

Blackbeard

**INTERIOR WOODWORK FINISH OPTIONS**

Limy Oak Finish (Standard)

Platinum Finish

Walnut Finish

**RECOMMENDED ENGINE OPTIONS**

Evinrude G2 2 x 200 HP
Evinrude G2 2 x 250 HP
Evinrude G2 2 x 300 HP

Mercury VERADO 1 x 400 HP
Mercury FourStroke 2 x 200 HP
Mercury FourStroke 2 x 250 HP
Mercury FourStroke 2 x 300 HP
Mercury Verado 2 x 350 HP

Volvo Penta Aquamatic 2 x 200 HP - D3 AQ
Volvo Penta Aquamatic 2 x 220 HP - D3 AQ

Indicative Q4 Specifications & Public Prices - from 1 Oct. 2019

Transport and crane costs, preparing the boat and antifouling are not included. The presented models are not binding. These prices are recommended ex-works with standard equipment. These prices are recommended ex-works with standard equipment. We reserve the right to change the prices without prior information, as well as the technical data our models. The performance of the boat vary on the equipment installed. All taxes, registration, customs, marina and etc costs are customers' responsibility. Balance due 10 business days before delivery from factory. All rights reserved. Dromeas Yachts 2019

Dromeas Yatçılık Sanayi Tic. Ltd. Şti.
Simge Cad. No:3/1 Yazıbaşı Torbalı / İzmir
35850 - TURKEY

Tel: +90 232 853 75 72 Fax: +90 232 853 75 73



www.dromeasyachts.com
info@dromeasyachts.com
instagram: dromeasyachts
#FORTHETOLOVEOFTHESA