

DROMEAS YACHTS

D33 CENTER CONSOLE TECHNICAL SPECIFICATIONS

D33
CENTER
CONSOLE



GENERAL CHARACTERISTICS

| | |
|--------------------------------|---|
| Length Overall | 9,80 m |
| Hull Length | 8,98 m |
| Beam | 3,08 m |
| Draft - hull | 0,51 m |
| Light Displacement(w/o Engine) | 2720 kg |
| Fuel Capacity | 550 L |
| Fresh Water Capacity | 100 L |
| Min. Engine Capacity | 400 HP |
| Max. Engine Capacity | 800 HP |
| Max. Speed | 52+ Knots |
| Cabins | 1 |
| Berths | 2 |
| Max People on Board | 8 / 10 |
| Design Category | CE Cat. B / C |
| Designer | Klan Studio & Dromeas Design Studio |



STANDARD EQUIPMENT

CONSTRUCTION

HULL

- White gelcoat
- Vinylester skin coat
- One-shot vacuum infused epoxyglass sandwich hull
- PVC foam cored light hull & deck construction
- Vacuum infused epoxyglass foam cored bulkheads
- Carbon-fiber reinforced closed cell PU Formed GRP spider grid
- Fully non-wood non-polyester structural construction

DECK

- White gelcoat
- Non-skid deck
- Vinylester skin coat
- One-shot vacuum infused epoxyglass sandwich hull
- PVC foam cored light hull & deck construction
- Vacuum infused epoxyglass foam cored bulkheads
- Carbon-fiber reinforced closed cell PU Formed GRP spider grid
- Fully non-wood non-polyester structural construction

DECK GEAR

- Heavy duty rubrail
- Non-Skid decking
- Self draining anchor locker
- 2 forward stainless steel mooring cleats
- 2 midship stainless steel cleats
- 2 aft stainless steel mooring cleats
- Self draining deck & lockers
- Stainless steel bow roller
- Stainless steel pulpit
- Stainless steel cockpit grab rails
- Swimming platform
- Folding swim ladder

EXTERIOR COMFORT

- T-Top, in black with LED lighting
- Storage lockers under the cockpit floor
- Storage locker in the cockpit sofa
- Foredeck cushions

WETBAR

- Stainless steel sink and faucet
- Drawers for kitchenware
- Waste bin
- Storage

INTERIOR COMFORT

- 1 Cabin + 1 Head + 1 storage layout

SALOON

- Sliding companionway door
- Ceiling LED lights

HELM STATION

- Integrated performance console
- Dashboard with engine control & space for Nav. station
- Electrical instrument switches
- Pilot and co-pilot seats
- Compass
- Horn
- Fuel Gauges
- Cupholders
- Console Handrails

FORWARD CABIN

- Double berth
- Storage under bed
- Access to bowthruster under bed
- Mirror
- USB plugs

MAIN HEAD

- Shower
- Sink
- Mirror
- Cupboards & storage

STORAGE & UTILITY SPACES

- Access to technical compartment
- Floor storage and lockers
- Mattress for optional cabin

MECHANICAL EQUIPMENT

- Hydraulic steering
- Stainless steel fixed fuel tank with deck fillers
- Manual & electrical bilge pumps
- Fresh water system

ELECTRICAL SYSTEMS & LIGHTING

- Start batteries
- Service batteries
- Electrical systems control panel
- Navigation lights
- Windscreen wipers
- Screen wash
- 12 V plugs



PACKAGES

COMFORT PACK

Electrical windlass & remote
Cockpit shower
Manual toilet with seawater system with 40L holding tank & deck pump-out
Shore power connection 220V & Battery Charger (25A)

PREMIERE PACK

Adjustable wood cockpit table
Aft cockpit removable tent (incl. Poles)
Removable carpet set - saloon & cabins
Refrigerator
Upgrade to electrical toilet with seawater system
Cockpit LED Courtesy Lights

TRIM PACK

Bowthruster
Water heater system (only with shore power or generator)
Trim tabs

OFFSHORE PACK

Non-oxygenated livewell
Oxygenated livewell
Rod holders on side decks - 4
Rocket launchers - 3
Tackle box storages in cockpit
Knee pads along the bulwark



OPTIONS

ANCHORING & MOORING

Anchoring Kit - Galvanized Delta type anchor & chain
Mooring Kit - 4 x 10 M 14mm ropes for docking, 6 fenders with 6 Dromeas Yachts fender covers

Stern anchor roller with electric windlass and remote control
Ultra Marine Anchor & Swivel upgrade

DECK GEAR

Bow ladder
2 aft cleats for cross docking
Electrical windlass & remote
Stainless steel deck hand rails
Stainless steel roof rack with radar arch
Cockpit dive door

EXTERIOR COMFORT

T-Top stainless steel roll bar arch with 3 rod holders
Teak cockpit floor & swim platform
Eshtec decking on cockpit floor, side decks & swim platforms
Aft cockpit sunbed (requires table)
Adjustable wood cockpit table
Foredeck adjustable teak table with conversion to sunbed
Cockpit shower
Aft cockpit removable tent (incl. Poles)
Removable foredeck tent
Sea water pump for deck wash
Waterski pole



FISHING

Non-oxygenated livewell
Oxygenated livewell
Rod holders on side decks - 4
Rocket launchers - 3
Tackle box storages in cockpit
Outriggers

WETBAR

Refrigerator
Additional refrigerator
Gas Burner stove
Electric Grill - 220V (only with shore power or generator)

INTERIOR COMFORT

1 Cabin + 1 Head + 1 storage layout
2 Cabin + 1 Head layout
Forward and aft cabin separation with curtains
Removable carpet set - saloon & cabins
Wood interior floors - Saloon & cabins

MAIN HEAD

Manual toilet with seawater system with 40L holding tank & deck pump-out
Upgrade to electrical toilet with seawater system



MECHANICAL EQUIPMENT

Bowthruster
 Evinrude iDock System - for twin engine installations
 Mercury Vesselview 5" Multi Touch (instead of std. Smart craft dials)
 Mercury Vesselview 7" Multi Touch (instead of std. Smart craft dials)
 Mercury Skyhook Anchor with joystick piloting - twin installation
 Mercury Skyhook Anchor with joystick piloting - triple installation
 Mercury Skyhook Anchor with joystick piloting - quad installation
 Water heater system (only with shore power or generator)
 Air conditioning System - 8000 BTU (only with shore power or generator)
 4 kW Diesel Generator
 Forced air heating system - Webasto
 Seakeeper stabilization system
 Trim tabs
 Humphree interceptor system with automatic trim
 Pre-Rigging / Single Mercury
 Pre-Rigging / Twin Mercury
 Pre-Rigging / Single Evinrude
 Pre-Rigging / Twin Evinrude

ELECTRICAL SYSTEMS & LIGHTING

Additional 12V battery
 Chain Counter & control at helm
 Search Light
 Shore power connection 220V & Battery Charger (25A)
 Inverter 12v/220v 700W
 Cockpit LED Courtesy Lights
 Solar Energy Pack, 2 x 100W
 Underwater Lights

NAVIGATION INSTRUMENTS

Navigation Package 1 - GARMIN GPSMAP 922 - 9" MFD Chartplotter, Transducer, Navionics Map Package, VHF 110i
 Navigation Package 2 - GARMIN GPSMAP 1222 - 12" MFD Chartplotter, Transducer, Navionics Map Package, VHF 110i
 Navigation Package 7 - 2 x GARMIN GPSMAP 922 - 9" MFD Chartplotter, Transducer, Navionics Map Package, VHF 210i
 Navigation Package 8 - 2 x GARMIN GPSMAP 1222 - 12" MFD Chartplotter, Transducer, Navionics Map Package, VHF 310i
 VHF - GARMIN 210i
 Intelliducer - Depth & Temperature
 GARMIN GPSMAP 922 - 9" MFD Chartplotter
 GARMIN GPSMAP 1222 - 12" MFD Chartplotter
 GARMIN GPSMAP 1622 - 16" MFD Chartplotter
 GARMIN GPSMAP 922 - 2 x 9" MFD - Chartplotter
 GARMIN GPSMAP 1222 - 2 x 12" MFD Chartplotter
 GARMIN Radar GMR 18
 GARMIN Sonar Module

ENTERTAINMENT SYSTEMS

Fusion Marine Stereo Sound System, Control Unit & 2 speakers in cockpit
 Fusion Sound System Upgrade 1 - additional 2 speakers & 4 ch Ampilifier (requires Fusion Sound System)
 Fusion Sound System Upgrade 2 - 1 subwoofer & 5 ch Ampilifier (requires upgrade 1)
 Additional control unit, cockpit
 Cabin 22" LED TV & DVD Player

COVERS

Canopy closing under T-Top in charcoal
 Aft cockpit cover
 Forward cockpit cover
 Wetbar cover
 Console cover



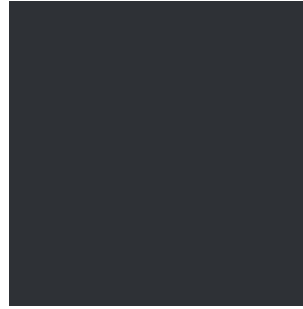
HULL COLOUR OPTIONS

Pure White (Standard)
RAL 9010

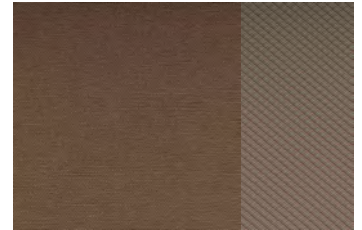
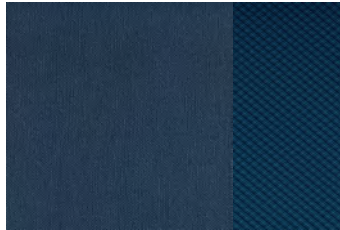
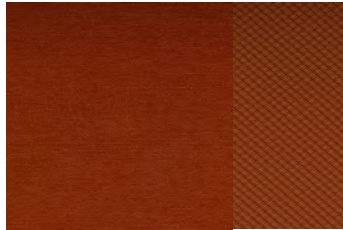
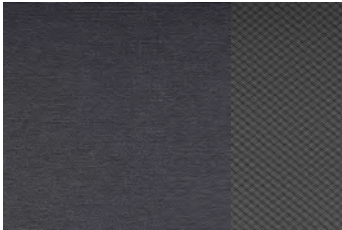
Military Gray
RAL 7030

Special Ops Antracite Gray
RAL 7011

Fisherman's Navy Blue
RAL 5026

**UPHOLSTERY COLOUR OPTIONS**

Silvertex & Diamente Combinations

**UPHOLSTERY UPGRADE OPTIONS**

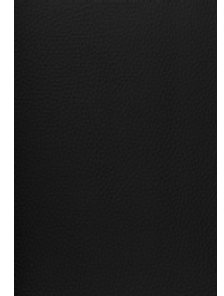
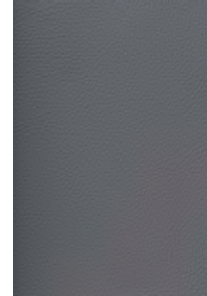
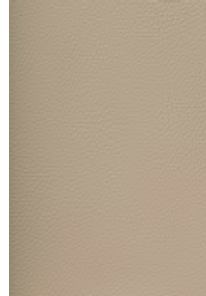
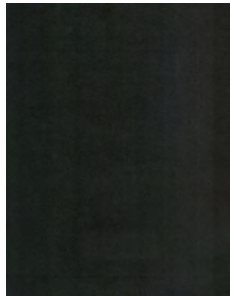
Gray
Niroxx

Anthracite

White Cap

Beluga Leather
Dove Gray

Blackbeard

**INTERIOR WOODWORK FINISH OPTIONS**

Limy Oak Finish (Standard)

Platinum Finish

Walnut Finish

**RECOMMENDED ENGINE OPTIONS**

Evinrude G2 2 x 200 HP
Evinrude G2 2 x 250 HP
Evinrude G2 2 x 300 HP

Mercury VERADO 1 x 400 HP
Mercury FourStroke 2 x 200 HP
Mercury FourStroke 2 x 250 HP
Mercury FourStroke 2 x 300 HP
Mercury Verado 2 x 350 HP

Volvo Penta Aquamatic 2 x 200 HP - D3 AQ
Volvo Penta Aquamatic 2 x 220 HP - D3 AQ

Indicative Q4 Specifications & Public Prices - from 1 Oct. 2019

Transport and crane costs, preparing the boat and antifouling are not included. The presented models are not binding. These prices are recommended ex-works with standard equipment. We reserve the right to change the prices without prior information, as well as the technical data our models. The performance of the boat vary on the equipment installed. All taxes, registration, customs, marina and etc costs are customers' responsibility. Balance due 10 business days before delivery from factory. All rights reserved. Dromeas Yachts 2019

Dromeas Yatçılık Sanayi Tic. Ltd. Şti.
Simge Cad. No:3/1 Yazıbaşı Torbalı / İzmir
35850 - TURKEY

Tel: +90 232 853 75 72 Fax: +90 232 853 75 73



www.dromeasyachts.com
info@dromeasyachts.com
instagram: dromeasyachts
#FORTHELOVEOFTHESEA