



## D28 SUV TECHNICAL SPECIFICATIONS



### GENERAL CHARACTERISTICS

Length Overall	8,35 m
Hull Length	7,90 m
Beam	2,60 m
Draft - hull	0,45 m
Light Displacement(w/o engine)	2645 kg
Fuel Capacity	340 L
Fresh Water Capacity	80 L *
Engine range (outboard)	200 - 400 HP
Top speed range	30 - 50 Knots
Max. People on board	7 / 9
Cabins	1
Berth	2 / 4
Design Category	CE Cat. B / C
Hull	Twin Stepped Deep-V Hull
Hull Design	Adam Younger Design
Design	Epikworks & Dromeas Design Studio
Engineering	Gurit & Dromeas Engineering



## STANDARD EQUIPMENT

### CONSTRUCTION

#### HULL & DECK

White gelcoat hull & deck  
 Non-skid deck  
 Vinylester skincoat  
 Vacuum infused PVC foam-cored sandwich fiberglass hull & deck  
 Vacuum infused PVC foam-cored fiberglass bulkheads  
 Closed cell PU Formed GRP spider grid  
 Fully non-wood non-polyester structural construction

#### DECK GEAR

Heavy duty rubrail  
 Non-Skid decking  
 Self draining anchor locker  
 Stainless steel deck hand rails  
 2 forward stainless steel mooring cleats  
 2 midship stainless steel cleats  
 2 aft stainless steel mooring cleats  
 Self draining deck & lockers  
 Stainless steel bow roller  
 Stainless steel pulpit  
 Swimming platform  
 Folding swim ladder

#### EXTERIOR COMFORT

Dive Door  
 Foredeck sunbed  
 Storage lockers under the cockpit floor  
 Storage under forward cockpit seating

#### SUV PILOTHOUSE

Sliding entrance doors on port & starboard  
 Sliding aft window  
 Aft seating  
 Storage spaces  
 Cupholders  
 On deck storage with conversion to bed (only with standard fuel tank)

#### WETBAR (Under captains seat)

Drawers  
 Storage (optional fridge space)  
 Storage spaces

### HELM STATION

Integrated performance console  
 Dashboard with engine control & space for Nav. station  
 Electrical instrument switches  
 Pilot and co-pilot seats  
 Compass  
 Horn  
 Fuel Gauges  
 Cupholders  
 Console Handrails

### INTERIOR

Sliding entrance door  
 Twin bed  
 Storage spaces  
 Access to technical equipment  
 12V & USB outlets  
 LED ceiling lights

### DAY HEAD

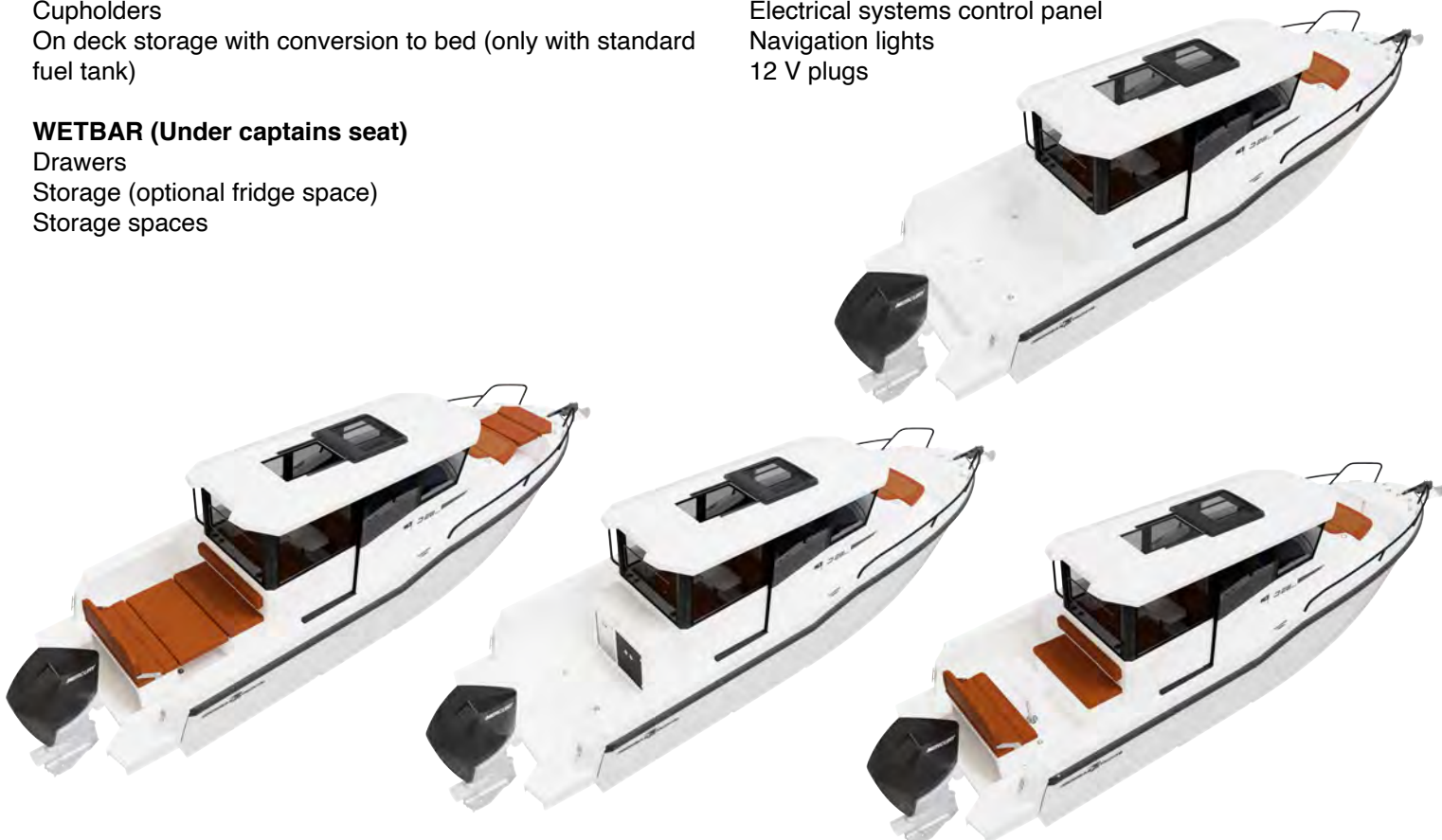
Access from console  
 Optional manual toilet with gray water tank & seawater system  
 Mirror  
 Storage Spaces  
 Ceiling LED light  
 Access to technical equipment

### MECHANICAL EQUIPMENT

Hydraulic steering (with engine or pre-rigging)  
 Stainless steel fixed fuel tank with deck fillers  
 Manual & electrical bilge pumps

### ELECTRICAL SYSTEMS & LIGHTING

Start battery, 1x 110 Ah incl. with engine  
 Service battery, 1 x 110 Ah  
 Electrical systems control panel  
 Navigation lights  
 12 V plugs



## OPTIONS

### DECK GEAR & EXTERIOR COMFORT

Electrical windlass & remote  
 Hardtop electrical opening glasstop (instead of manual)  
 Hardtop stainless steel roll bar  
 Hardtop aft arch with 4 rod holders  
 Aft folding cockpit bench  
 Aft cockpit storage bench (N/A with cockpit wetbar)  
 Removable aft cockpit table with conversion to sunbed ( requires both benches for sunbed convesion)  
 U-Deck cockpit floor & swim platform decking  
 Teak cockpit floor & swim platform  
 Eshtec decking on cockpit floor, side decks & swim platforms  
 Aft cockpit removable tent (incl. carbon fiber poles)  
 Removable foredeck tent (incl. carbon fiber poles)  
 Anchor locker cushions  
 Removable folding cockpit table with conversion to sunbed - forward  
 Rod holders on side decks - 2  
 Sea water pump for deck wash  
 Waterski pole

### FISHING

Oxygenated livewell - requires cockpit wetbar  
 Rod holders on side decks - 4  
 Outriggers

### WETBAR

Cockpit wetbar (N/A with aft cockpit storage seating)  
 Refrigerator (under helm)  
 Additional refrigerator (requires cockpit wetbar)  
 Electric Grill - 220V (only with cockpit wetbar & shore power )

### SUV CABIN

Interior seating adjustable table with conversion to sunbed  
 Interior curtains  
 Under cockpit storage bed sheet (only with standard fuel tank)

### INTERIOR COMFORT

Wood interior floor

### DAY HEAD

Manual toilet with seawater system with 30L holding tank & deck pump-out  
 Electrical toilet with seawater system with 30L holding tank & deck pump-out

### MECHANICAL EQUIPMENT

Bowthruster  
 Trim tabs  
 Fresh water system in wc and wetbar sink and faucet with 80 Liter tank and stainless steel deck filler  
 Cockpit shower - requires fresh water system  
 Hot water system, 15L (requires shore power & fresh water system)  
 Offshore fuel tank, upgrade to 450 Lt.  
 Mercury Vesselview 502 5" Multi Display

### ELECTRICAL SYSTEMS & LIGHTING

Additional 12V battery  
 Search Light  
 Shore power connection 220V & Battery Charger (30A)  
 Cockpit LED Courtesy Lights  
 Solar Energy Pack, 1 x 100W  
 Underwater Lights

### NAVİGASYON SİSTEMLERİ

VHF - GARMIN 115i  
 Intelliducer - Depth & temperature  
 GARMIN GPSMAP 922 - 9" MFD Chartplotter  
 GARMIN GPSMAP 1222 - 12" MFD Chartplotter  
 GARMIN GPSMAP 922 - 2 x 9" MFD - Chartplotter  
 GARMIN Radar GMR 18 HD+  
 GARMIN Fishfinder T 1500W CHIRP Sonar Module

### ENTERTAINMENT SYSTEMS

Fusion Marine Stereo Sound System,Control Unit RA70 with bluetooth & 2 speakers in cockpit  
 Fusion Sound System Upgrade 1 - additional 2 speakers & 2ch Amplifier (requires Fusion Sound System)  
 Fusion Sound System Upgrade 2 - 4 ch. Amplifier & subwoofer (requires Fusion system & Fusion upgrade 1)

### COVERS

Aft cockpit cover  
 Forward cockpit cover  
 Wetbar cover  
 Console Cover

### ANCHORING & MOORING

Anchoring Kit - 6kg galvanized Delta type anchor & 6mm. 30m.  
 Galvanized calibrated chain  
 Mooring Kit - 4 x 10 M 14mm ropes for docking, 4 fenders with 4 Dromeas Yachts fender covers

### TRANSPORT & DELIVERY

Shrink wrapping & shipping cradle  
 Antifouling Paint



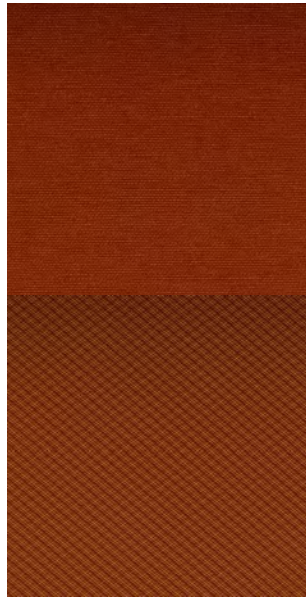
## UPHOLSTERY SELECTION

### Silververtex & Diamente Combinations

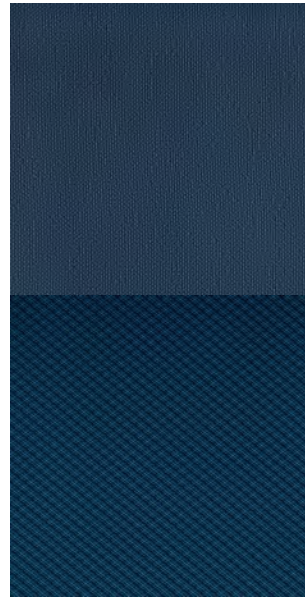
Titanium  
Mercury



Mandarin  
Sunset



Jet  
Regatta



Taupe  
Taupe



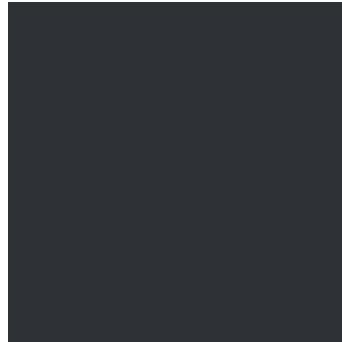
## HULL COLOUR SELECTION

Pure White (Standard)  
RAL 9010

Military Light Gray  
RAL 7030

Anthracite Gray  
RAL 7011

Fishermans' Blue  
RAL 5026



Transport and crane costs, preparing the boat and antifouling are not included. The presented models are not binding. These prices are recommended ex-works with standard equipment. We reserve the right to change the prices without prior information, as well as the technical data our models. The performance of the boat vary on the equipment installed. All taxes, registration, customs, marina and etc costs are customers' responsibility. Balance due 10 business days before delivery from factory. All rights reserved. Dromeas Yachts 2020